

PROMASTOP®-W Fire stopping wrap

Product handling guideline

Penetration seal



PROMASTOP®-W

Fire stopping wrap



PROMASTOP®-W is a pipe closure device. Flexibility is given by the possibility to wrap any diameter on site. PROMASTOP®-W protects against the spread of smoke, fire and heat.

General information

- PROMASTOP®-W is only suitable for built-in installation;
- For pipes and combustible pipe insulation install PROMASTOP-W flush or 5 mm outside the separating element, in the floor on the underside and in the wall on both sides;
- For plastic aluminium composite pipes install PROMASTOP®-W in pairs flush in floors and walls, except for Pipelife Radopress pipes just install PROMASTOP®-W on the underside of the floor;
- The amount of layers must be considered (see ETA, classification report or packaging table);
- Ensure enough space around the services to install a fire stopping penetration seal, otherwise the necessary space has to be created;
- Use category: type X - products intended for use in conditions exposed to weathering;
 - Category X - intended for use in conditions exposed to weathering (means that the product passed testing in different weather conditions according to TR 024:2009 - weather conditions between, -20 °C and +70 °C, with UV exposure and rain). Direct contact with moisture may cause surface irregularities on the intumescent inlay; therefore we recommend, that the product is kept away from direct contact with moisture.

System installation details

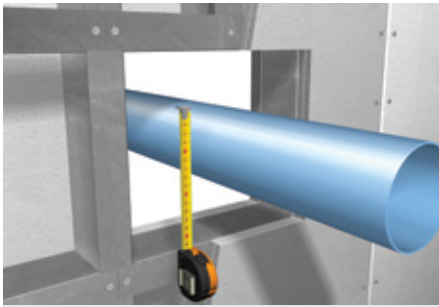
Please refer to ETA, classification report or handbook for installation details on pipes.

Safety information

Safety information sheet available on request.

Plastic pipes				
Pipe Ø (mm)	Layers		Wrap length (mm)	
U/C and U/U	U/C	U/U	U/C	U/U
32	1	2	≥ 122	≥ 263
40	1	3	≥ 146	≥ 498
50	1	3	≥ 185	≥ 600
56	1	3	≥ 200	≥ 645
63	1	3	≥ 220	≥ 710
75	2	4	≥ 535	≥ 1135
90	2	4	≥ 630	≥ 1320
110	2	5	≥ 750	≥ 2000
125	3	5	≥ 1295	≥ 2245
140	4	6	≥ 1950	≥ 3035
160	4	6	≥ 2195	≥ 3390

Installation guideline in PROMASTOP®-CC and PROMASTOP®-I mineral wool penetration



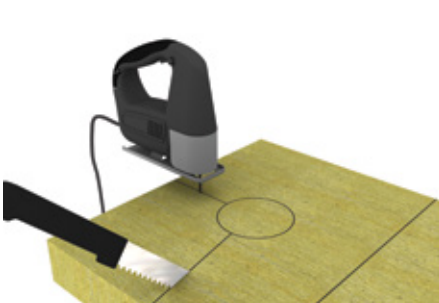
1. Define pipe outer diameter (installation could be done in mineral wool penetration seal, all steps required and core drilled hole, then skip point 4, 5 and 11)



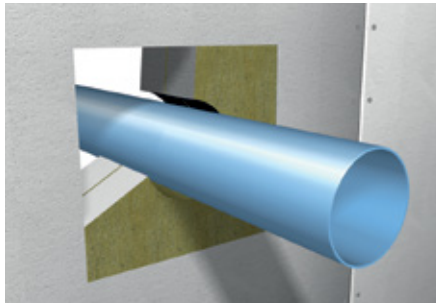
2. Define number of wrap layers (refer to table on first page)



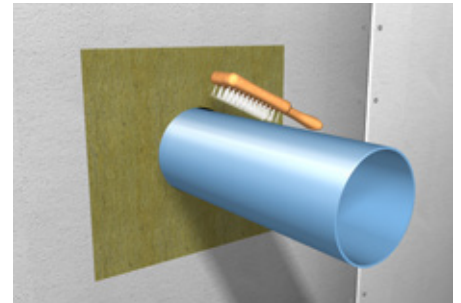
3. Cut to length



4. If installed in a PROMASTOP®-CC or PROMASTOP®-I penetration seal cut the mineral wool panels exactly to size



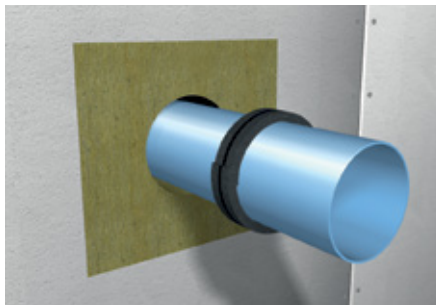
5. Insert mineral wool panels (for detailed description see PROMASTOP®-I or PROMASTOP®-CC installation guidelines)



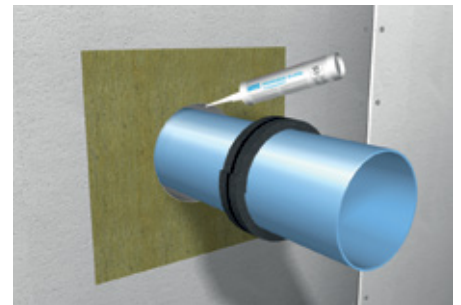
6. Clean opening and penetrating services



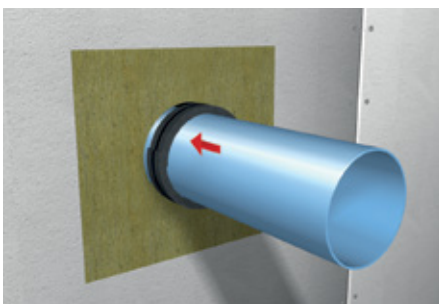
7. Peel off the self adhesive cover film



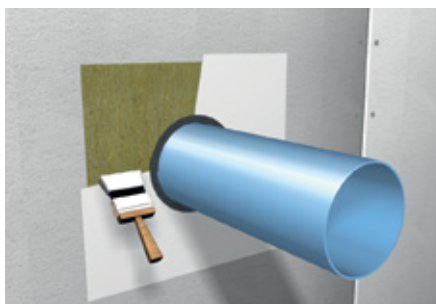
8. Wrap around the pipe, preferable the intumescent side facing the pipe



9. For fastening PROMASTOP®-W wall/floor use PROMASEAL®-A, PROMASEAL®-AG, PROMASTOP®-CC or PROMASTOP®-I between aperture opening and the substrate



10. PROMASTOP®-W shall be installed flush with the penetration seal or wall surface, maximum 5 mm in front of the wall/floor



11. Finalise penetration seal according to PROMASTOP®-I or PROMASTOP®-CC installation guidelines. Do not overpaint the wrap with coating or mortar;



12. Fix identification label

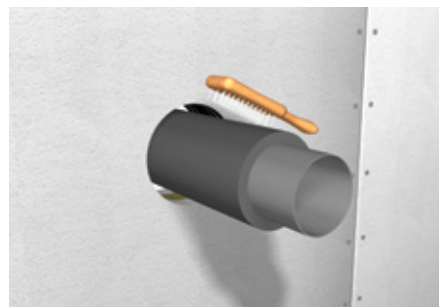
Installation guideline - steel pipes with combustibile insulation



1. Define number of wrap layers (refer to table on first page)



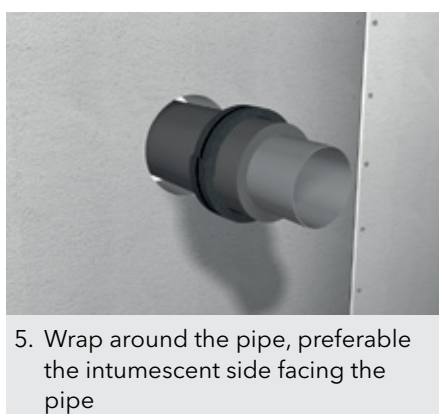
2. Cut to length



3. Clean opening and penetrating services



4. Peel off the self adhesive cover film



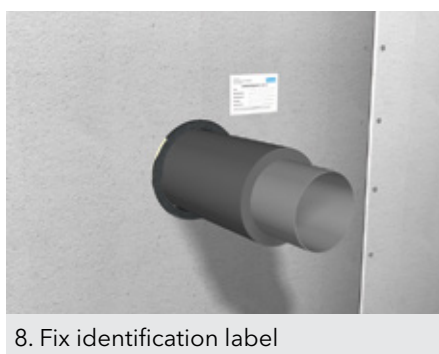
5. Wrap around the pipe, preferable the intumescent side facing the pipe



6. For fastening PROMASTOP®-W wall/floor use PROMASEAL®-A, PROMASEAL®-AG, PROMASTOP®-CC or PROMASTOP®-I between aperture opening and the substrate

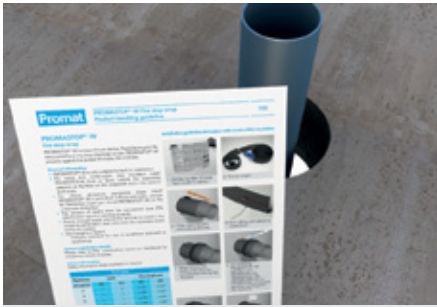


7. PROMASTOP®-W shall be installed flush with the penetration seal or wall surface, maximum 5 mm in front of the wall/floor



8. Fix identification label

Installation guideline massive floor



1. Define number of wrap layers (refer to table on first page)



2. Cut to length



3. Clean opening and penetrating services



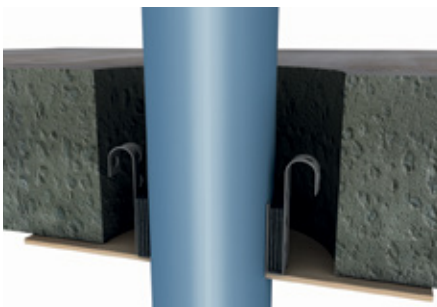
4. Peel off the self adhesive cover film



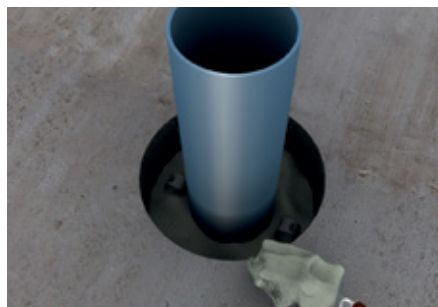
5. Wrap around the pipe



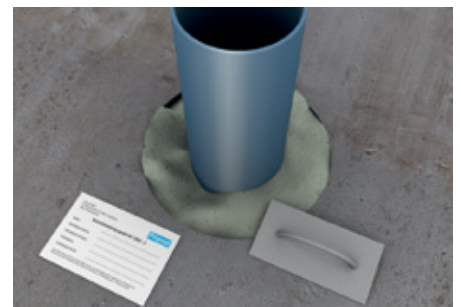
6. For U/U solutions use a perforated metal strip to form a hook; insert two hooks into the PROMASTOP®-W that it covers the complete 50 mm width; for U/C solutions no hook is required



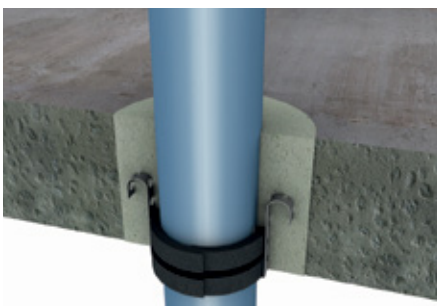
7. PROMASTOP®-W shall be installed flush with the shuttering. Minimum length of the hook is 75 mm, with a radius of 6-10 mm on the upper side



8. Close remaining opening with PROMASTOP®-VEN or PROMASTOP®-M



9. Smoothen the surface; Fix identification label



Cross section view

Installation guideline timber floor



1. Define number of wrap layers (refer to table on first page)



2. Cut to length



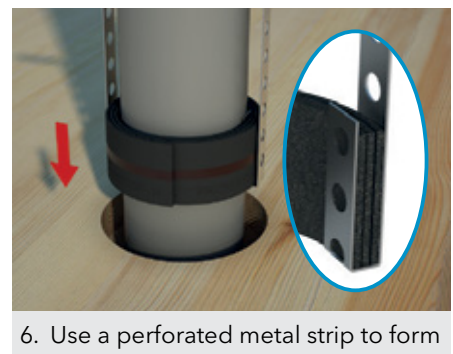
3. Clean opening and penetrating services



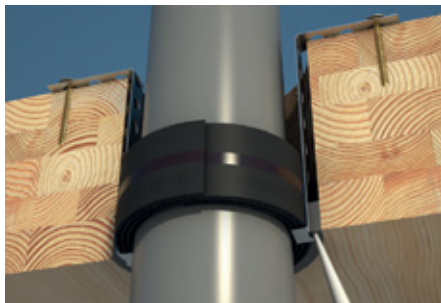
4. Peel off the self adhesive cover film



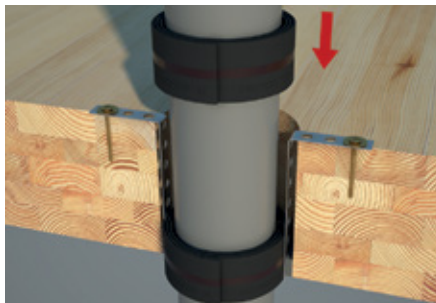
5. Wrap around the pipe



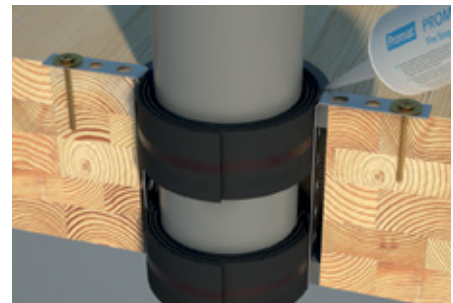
6. Use a perforated metal strip to form a hook; insert two hooks into the PROMASTOP®-W that it covers the complete 50 mm width



7. PROMASTOP®-W shall be installed flush to the bottom of the floor and fastened with screw to the hook; Seal the gap with PROMASEAL®-AG



8. Insert another wrap layers



9. Flash PROMASTOP®-W to the top of the floor and seal the gap with PROMASEAL®-AG



10. Fix identification label

The products must be applied in accordance with regulations for construction material in general and fire stopping in particular, with the applicable national test certificates and approvals and in accordance with applicable national building regulations. Products may only be applied by trained professionals with adequate knowledge and only after thorough review of the installation guidelines, safety data sheets, national test certificates and approvals. For additional information on how and where to use this product please refer to the Promat handbook or contact your local Promat office. All the relevant documents can be obtained free of charge from the local Promat office. For Non European Union countries separate guidelines are relevant. If required please contact us.

Bulgaria**Etex Building Performance S.A.**

Str. Vulturilor Nr. 98, 5th Floor
030857 Bucharest, Romania
M +359 878 81 51 05
E info.bg@promat-see.com
www.promat-see.com

Croatia, Bosnia and Herzegovina**Etex Building Performance****Promat d.o.o.**

Kovinska 4a
10090 Zagreb
T +385 1 349 63 24
F +385 1 379 41 54
E info.hr@promat-see.com
www.promat-see.com

Greece**Etex Building Performance S.A.**

Str. Vulturilor Nr. 98, 5th Floor
030857 Bucharest, Romania
T +40 31 224 01 00
F +40 31 224 01 01
E info@promat-see.com
www.promat-see.com

Hungary**Etex Building Performance****Creaton South-East Europe Kft.**

Malomkő u. 7.1. emelet
2040 Budaörs
M +36 30 343 2572
M +36 30 455 1273
E info.hu@promat-see.com
www.promat-see.com

Kosovo, Albania**Etex Building Performance Sh.A.**

Ulpiana, D-1, HY-4 Nr.2
10000 Prishtina
T +383 38 553 407
M +381 64 61 39 763
M +377 44 120 671
E info@promat-see.com
www.promat-see.com

Romania**Etex Building Performance S.A.**

Str. Vulturilor Nr. 98, 5th Floor
030857 Bucharest
T +40 31 224 01 00
F +40 31 224 01 01
E info.ro@promat-see.com
www.promat-see.com

Serbia, Macedonia, Montenegro**Etex Building Performance d.o.o.**

Vojvode Putnika 79
21208 Sremska Kamenica
T +381 21 210 10 90
M +381 63 625 426
M +381 63 510 720
E info.rs@promat-see.com
www.promat-see.com

Slovakia**Etex Building Performance****EBM Co. s.r.o.**

Štúrova 155
949 01 Nitra
M +421 915 936 126
E info.sk@promat-see.com
www.promat-see.com

Slovenia**Etex Building Performance****Promat d.o.o.**

Kidričeva 56b
4220 Škofja Loka
T +386 4 51 51 451
F +386 4 51 51 450
E info.si@promat-see.com
www.promat-see.com